



EstesRockets.com

TASER™

1491

AGES
10+



Skill Level

BEGINNER

MODEL ROCKET INSTRUCTIONS

KEEP FOR FUTURE REFERENCE

IMPORTANT: Please record date found on decal and keep for future reference. _____



CAUTION:

May not apply to all kits. For safe handling of plastic cement, epoxy, spray adhesive, CA glue, CA accelerator, paint/finishing materials, see manufacturer's warnings and follow instructions for use. To avoid injury, use extreme caution when using hobby knife, scissors, drills, and any cutting tools.

SUPPLIES



SCISSORS



FINE SANDPAPER



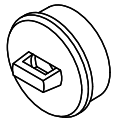
YELLOW GLUE



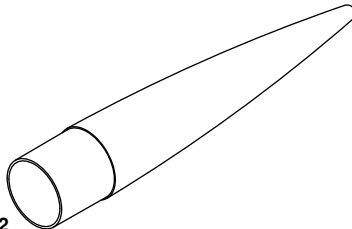
MASKING TAPE



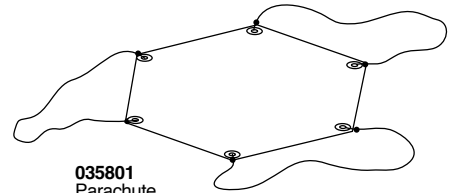
PLASTIC CEMENT



072654
Nose cone insert



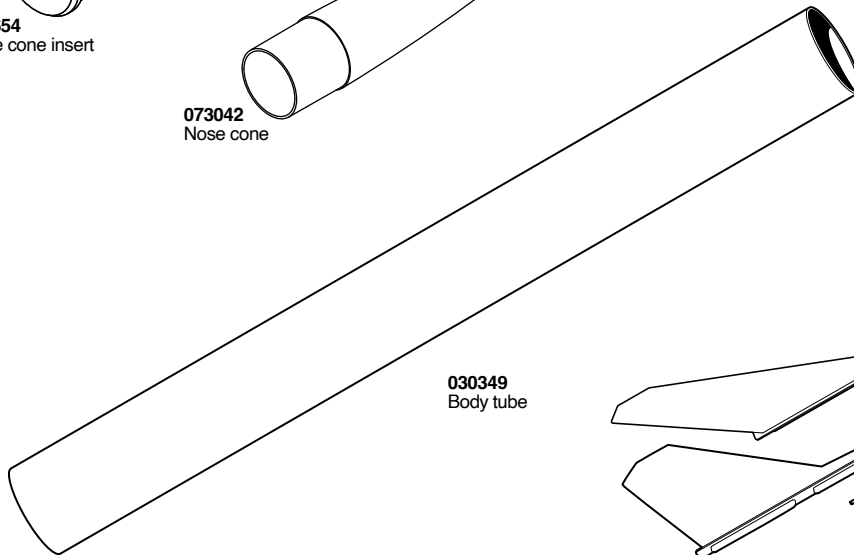
073042
Nose cone



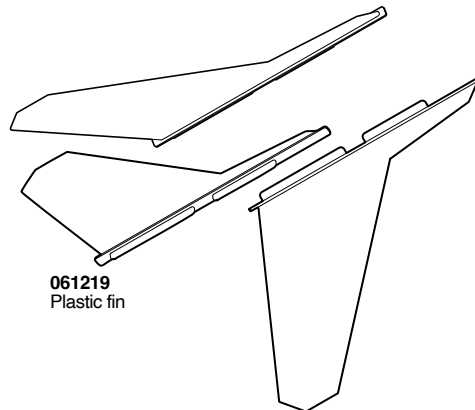
035801
Parachute



038367
Shock cord

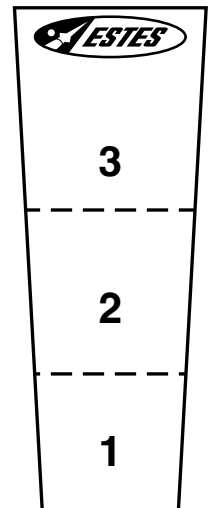
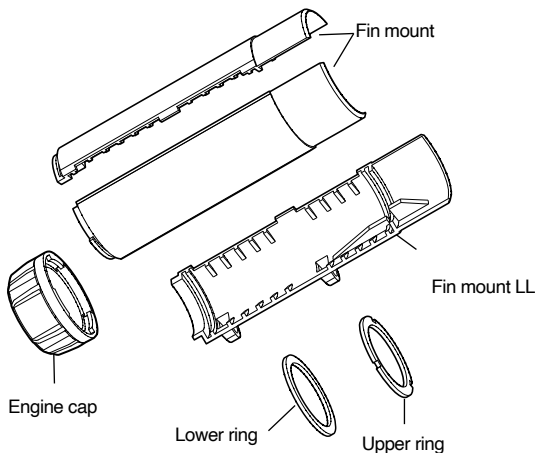


030349
Body tube



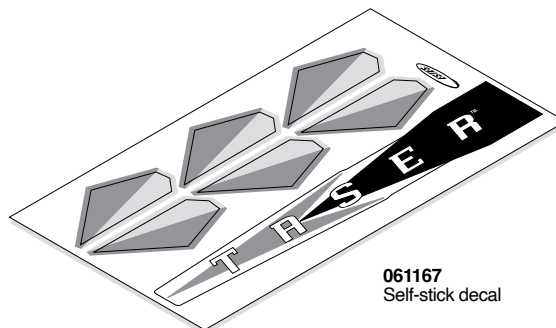
061219
Plastic fin

061218 PLASTIC PARTS SET



Shock cord mount

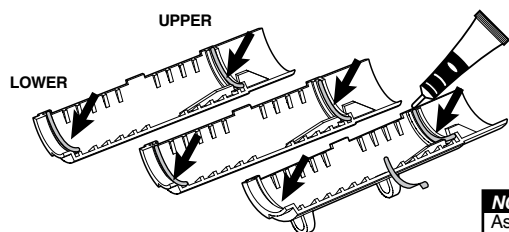
(Make a copy if you want to keep instructions.)



061167
Self-stick decal

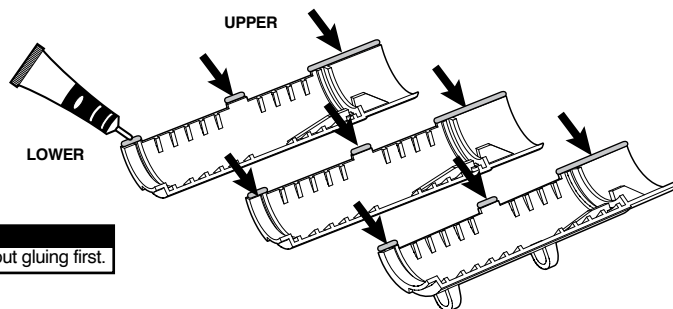
ASSEMBLE FIN MOUNT

1. Apply plastic cement in grooved channels.

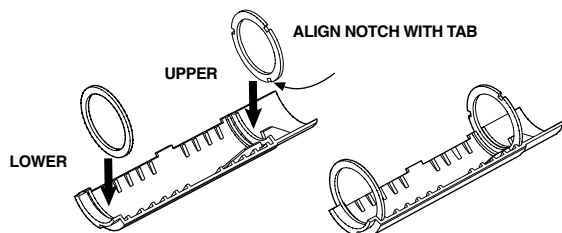


NOTE:
Assemble all parts together without gluing first.

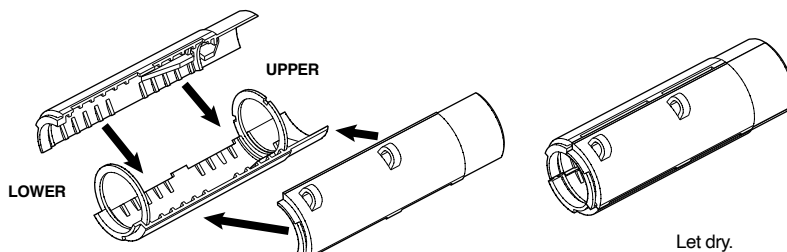
2. Apply plastic cement to the raised sections.



3. Place upper ring (notched) in upper channel and lower ring in lower channel of one fin mount.

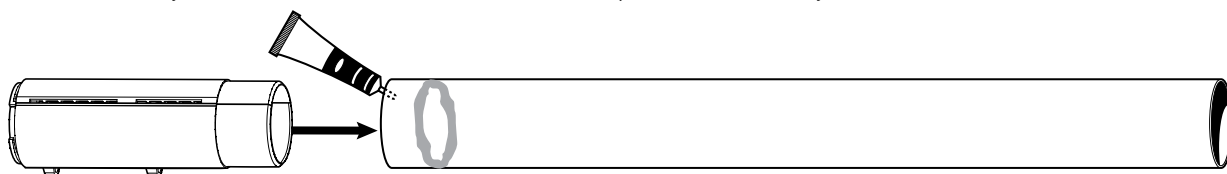


4. Align fin mount sections with rings in place and press together. Hold until set.



ATTACH BODY TUBE

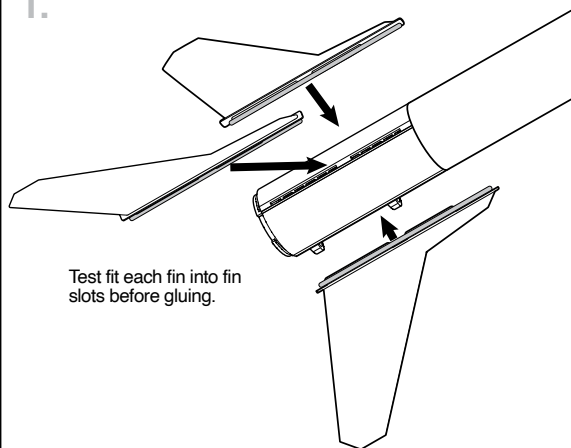
1. Apply plastic cement inside the body tube as shown.



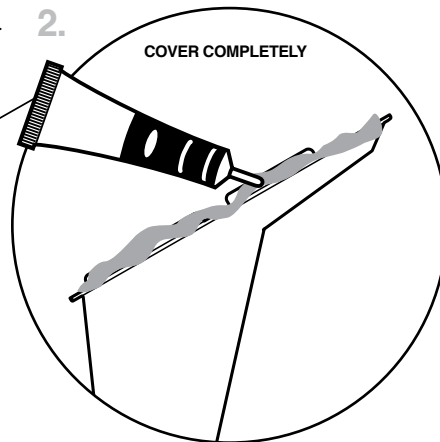
2. Wipe excess cement. Let dry.

ATTACH FINS

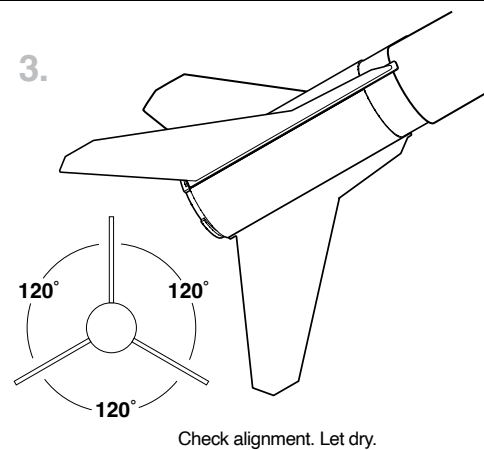
- 1.



- 2.

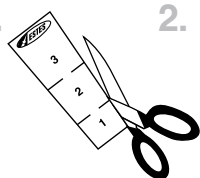


- 3.

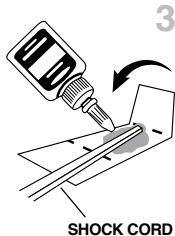


INSTALL SHOCK CORD

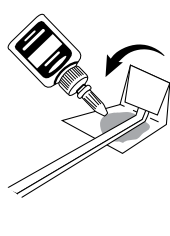
- 1.



- 2.



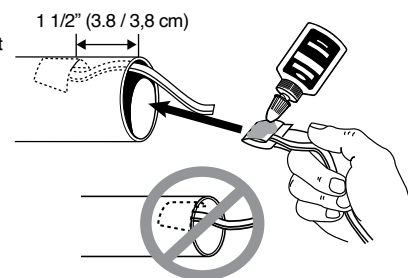
- 3.



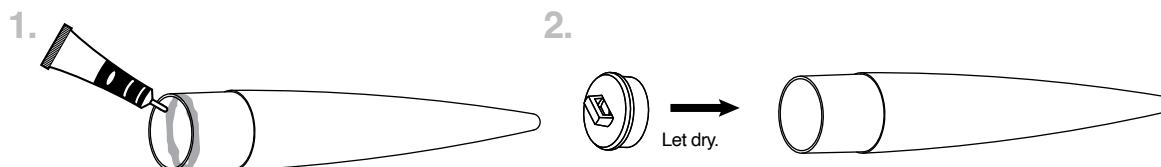
4. Hold until set.



5. Hold until set. Let dry.



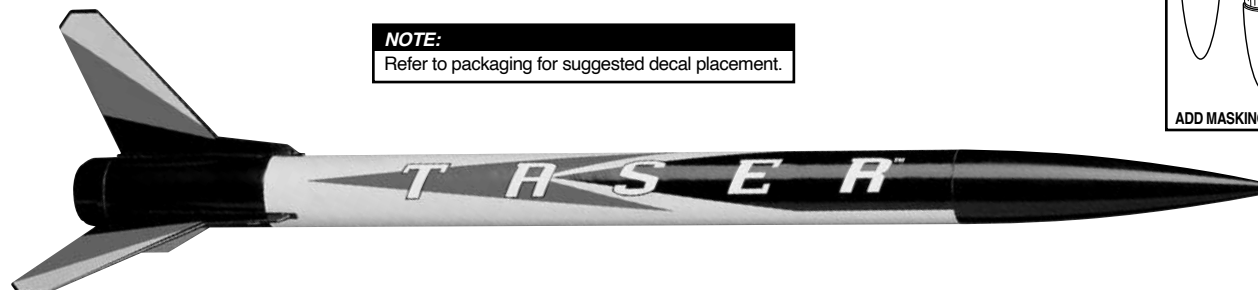
ASSEMBLE NOSE CONE



IF NOSE CONE FIT IS...



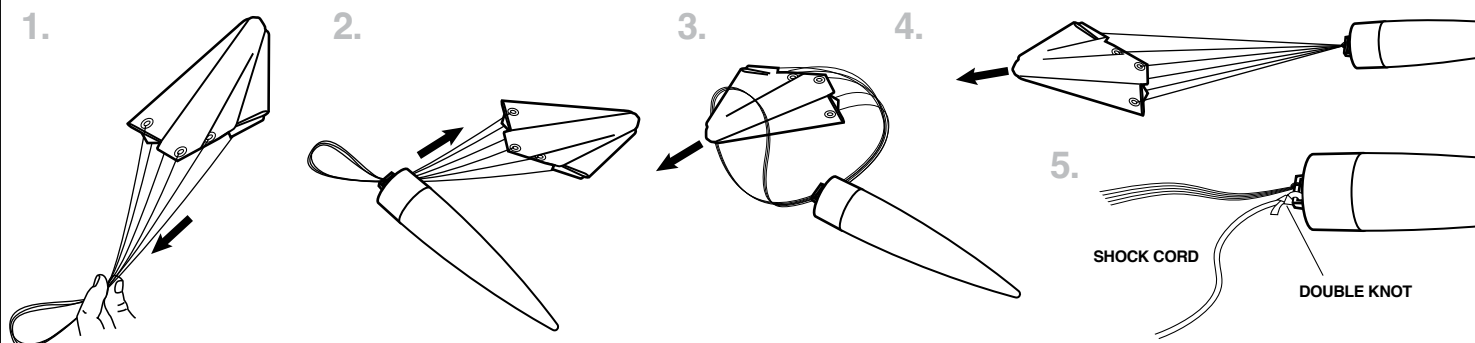
APPLY DECAL



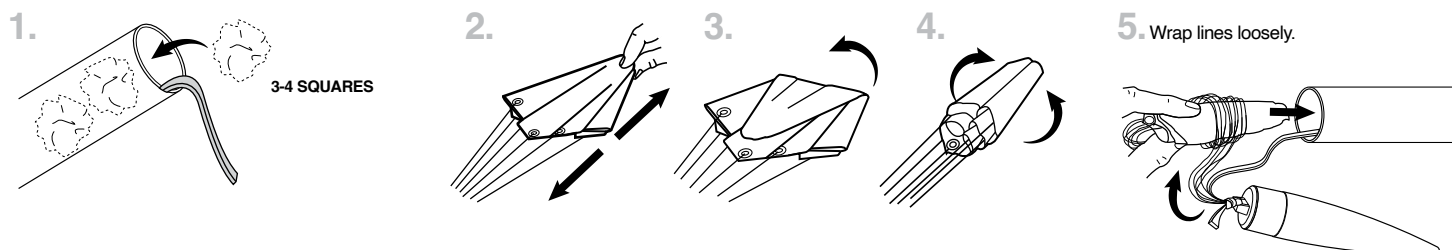
NOTE:

Refer to packaging for suggested decal placement.

PREPARE RECOVERY SYSTEM



PREPARE FLIGHT RECOVERY



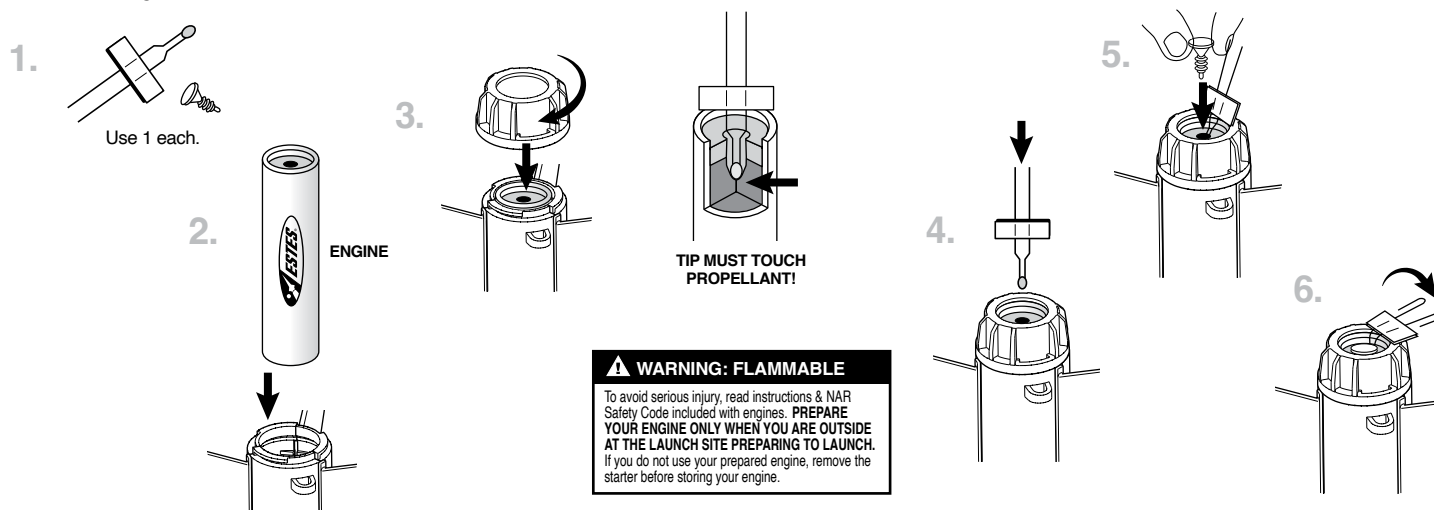
NOTE:

Only Estes Recovery Wadding recommended.

NOTE:

Recovery wadding and parachute must slide easily into body tube. If too tight, redo.

PREPARE ENGINE



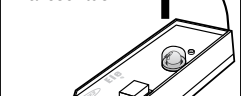
WARNING: FLAMMABLE

To avoid serious injury, read instructions & NAR Safety Code included with engines. **PREPARE YOUR ENGINE ONLY WHEN YOU ARE OUTSIDE AT THE LAUNCH SITE PREPARING TO LAUNCH.** If you do not use your prepared engine, remove the starter before storing your engine.

COUNTDOWN AND LAUNCH

NOTE:

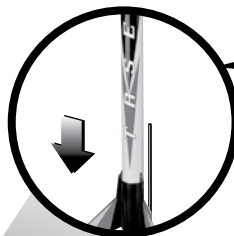
Always keep the key **OUT** until final countdown.



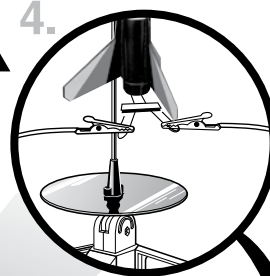
2.



3.



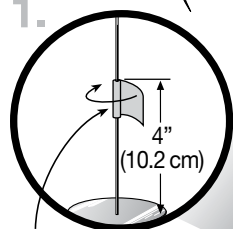
4.



5.

Fully extend your launch controller wire before launching.

1.



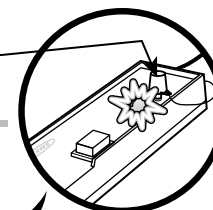
MASKING TAPE

NOTE:

It is important that enough tape is wrapped around launch rod so launch lug does not go over tape.

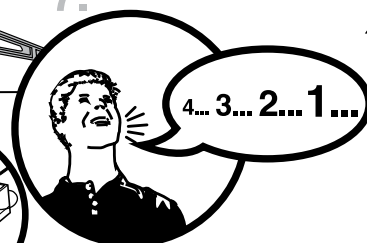
KEY

6.



Insert key, push down hard. Bulb will light.

7.



While holding key down FIRMLY, press launch button until LIFTOFF!

NOTE:

Estimated weight: 1.6 oz. (45.4 g)

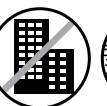
ESTES® LAUNCH SUPPLIES NEEDED (Sold Separately)

- Porta-Pad® II Launch Pad
- Electron Beam® Launch Controller
- Recovery Wadding
- Starters (with engines)
- Plugs (with engines)
- Recommended Estes® Engines: A8-3 (First Launch), B4-4, B6-4, B6-6, C6-5, C6-7

PRECAUTIONS



NAR SAFETY CODE



NO DRY GRASS OR WEEDS

PRE-LAUNCH CHECK For safety, never launch a damaged rocket. Check the rocket's body, nose cone and fins. Also, check the engine mount, recovery system and launch lug(s). Repair any damage before launching the rocket.

FLYING YOUR ROCKET Choose a large field (500 ft. [152 m] square) free of dry weeds and brown grass. The larger the launch area, the better your chance of recovering your rocket. Launch only with little or no wind and good visibility. Always follow the National Association of Rocketry (NAR) SAFETY CODE (enclosed).

MISFIRES TAKE THE KEY OUT OF THE CONTROLLER. WAIT ONE MINUTE BEFORE GOING NEAR THE ROCKET. Disconnect the micro-clips and remove the engine. Take the plug and starter out of the engine. A burned starter means the starter tip was not touching engine propellant. Install a new starter; be sure the tip is touching propellant inside the engine. Push the plug in place. Repeat steps under Countdown and Launch.