



EstesRockets.com

AGES
10+

Xarconian Cruiser

3223

Skill Level

EXPERT



MODEL ROCKET INSTRUCTIONS

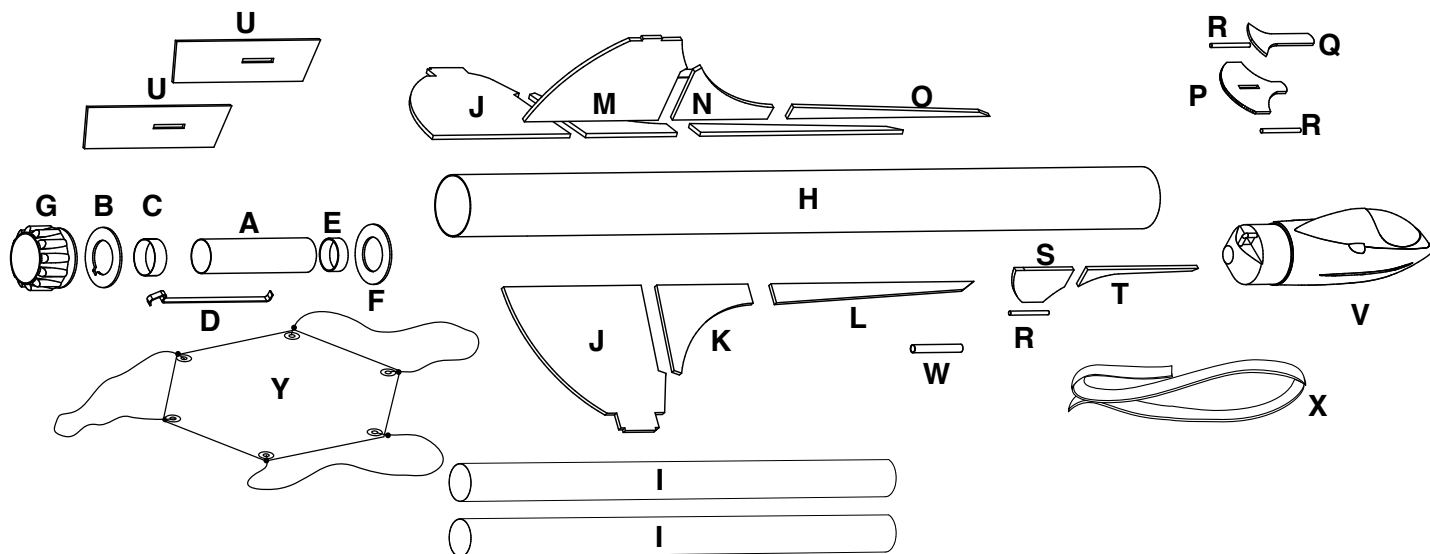
KEEP FOR FUTURE REFERENCE

IMPORTANT: Please record date found on decal and keep for future reference. _____

CAUTION:

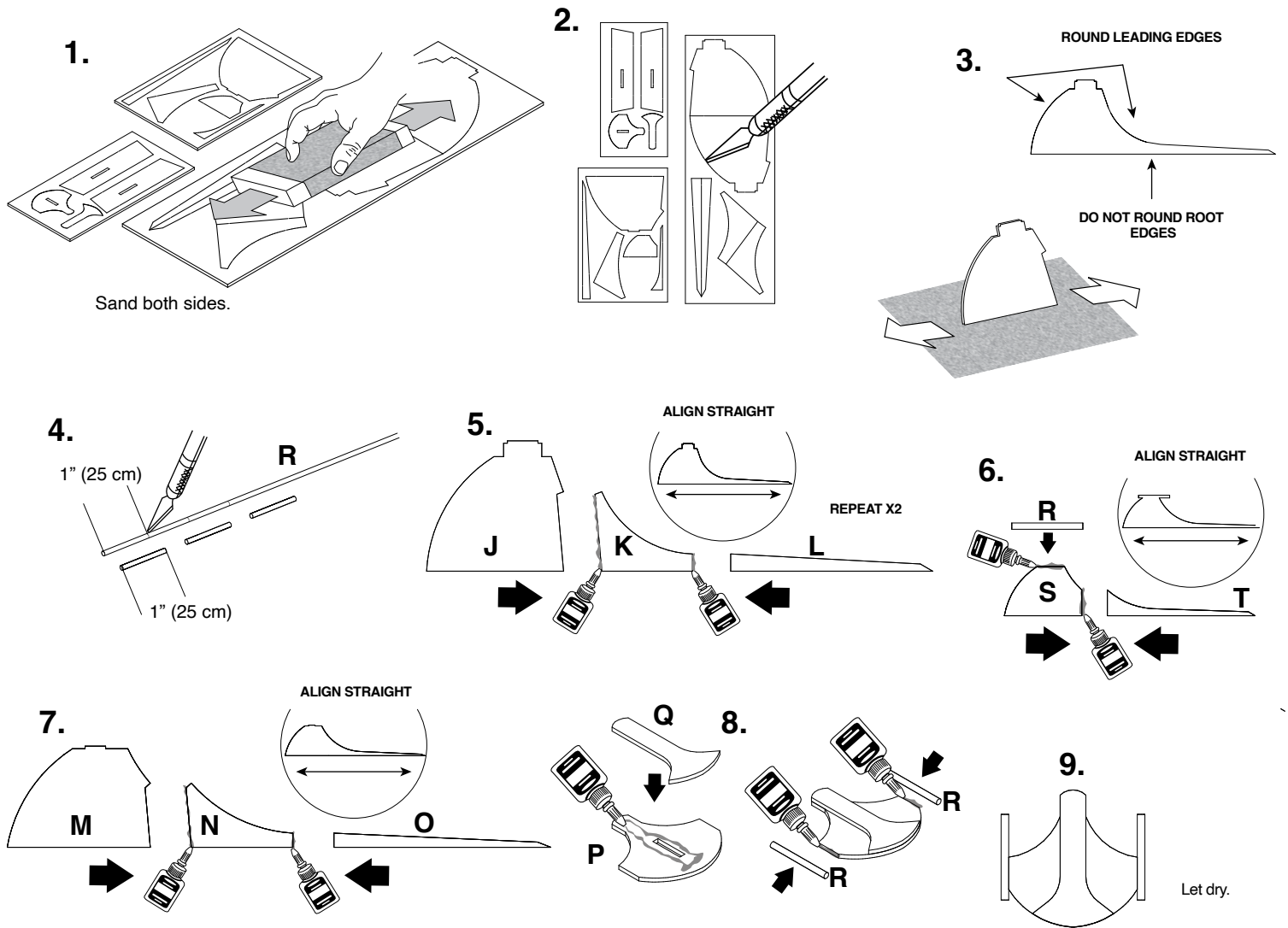
May not apply to all kits. For safe handling of plastic cement, epoxy, spray adhesive, CA glue, CA accelerator, paint/finishing materials, see manufacturer's warnings and follow instructions for use. To avoid injury, use extreme caution when using hobby knife, scissors, drills, and any cutting tools.

SUPPLIES

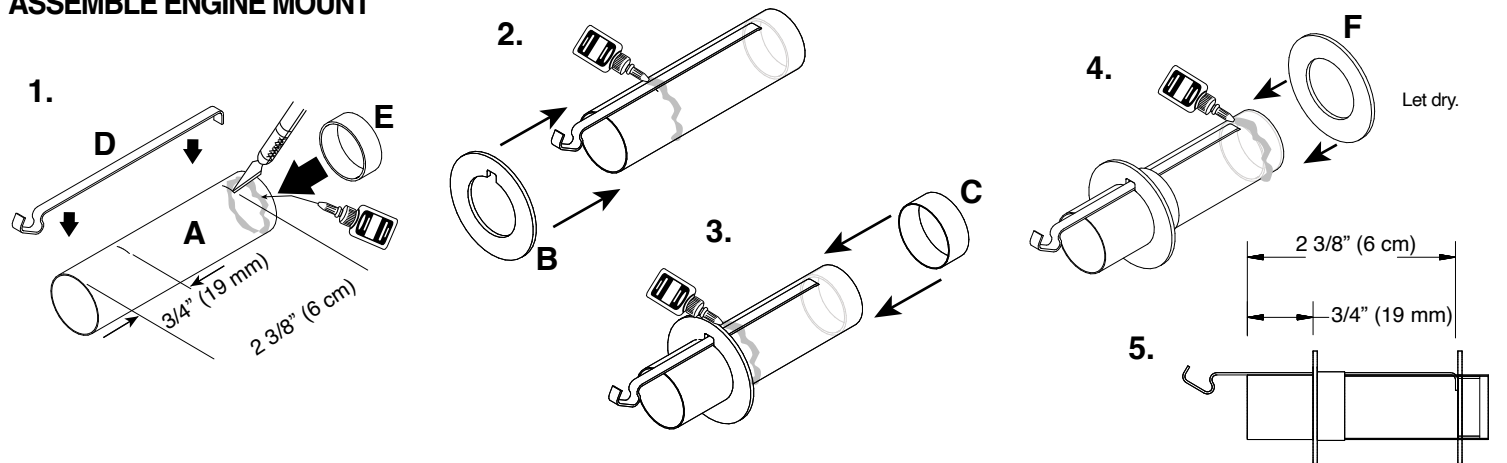


Part	Qty	Description	Part Number
A	1	Engine Mount Tube	030408
B	1	Notched Centering Ring	030125
C	1	Mylar Engine Hook Retainer Ring	030168
D	1	Engine Hook	035021
E	1	Engine Block	030162-2
F	1	Centering Ring	030125
G	1	Tail Cone	072690
H	1	BT55 Body Tube 18" (45.7 cm)	030382
I	2	1090 Body Tube 11" (27.9 cm)	031366
J - L	2 ea	Laser Cut Fin Pieces	066387
M - O	1 ea	Laser Cut Fin Pieces	066388
P - Q	1 ea	Laser Cut Pieces	066393
R	1	Wood Dowel	032062
S - T	1 ea	Laser Cut Fin Pieces	066388
U	2	Laser Cut Pieces	066393
V	1	Plastic Nose Cone	072689
W	1	Launch Lug	038166
X	1	Shock Cord	038369
Y	1	Parachute	035802
	2	Waterslide Decals - not shown	090001-3223A 090001-3223B

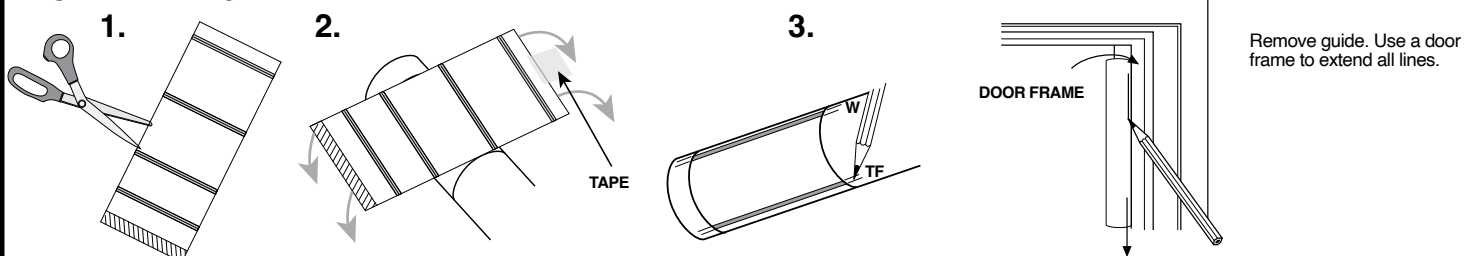
PREPARE FINS



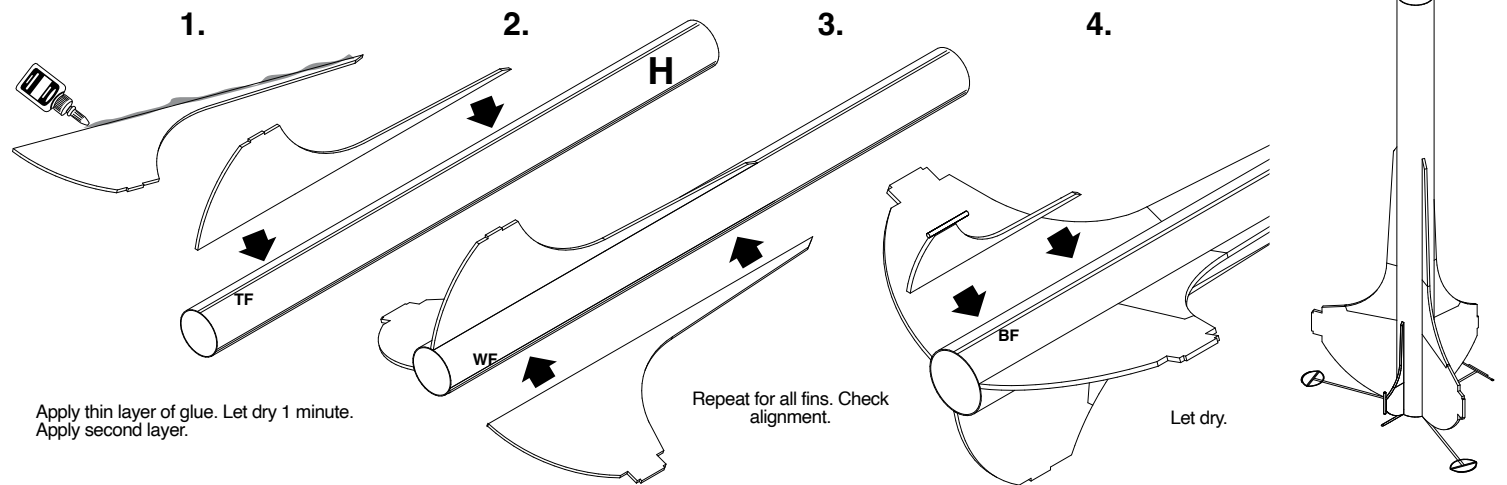
ASSEMBLE ENGINE MOUNT



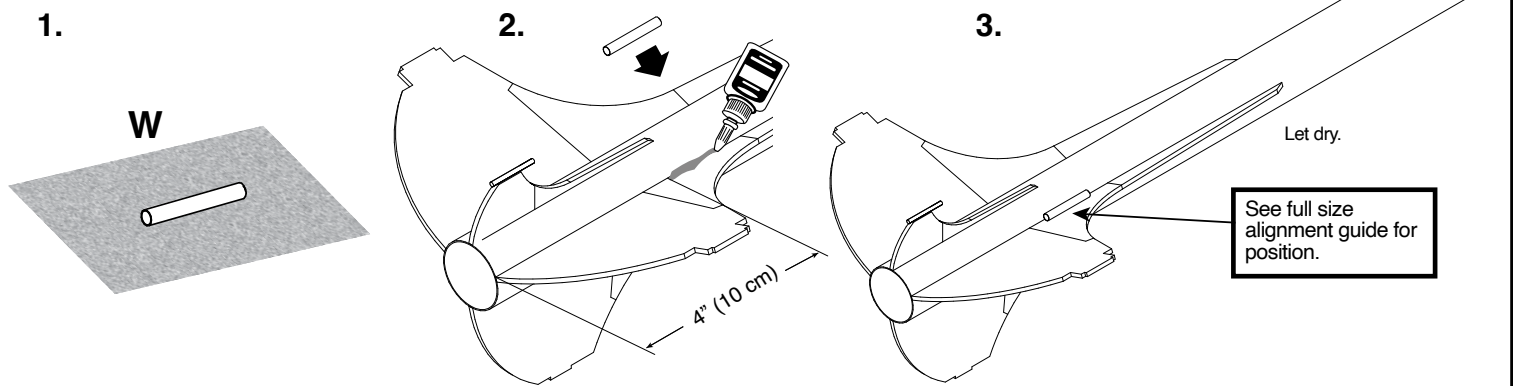
TUBE MARKING



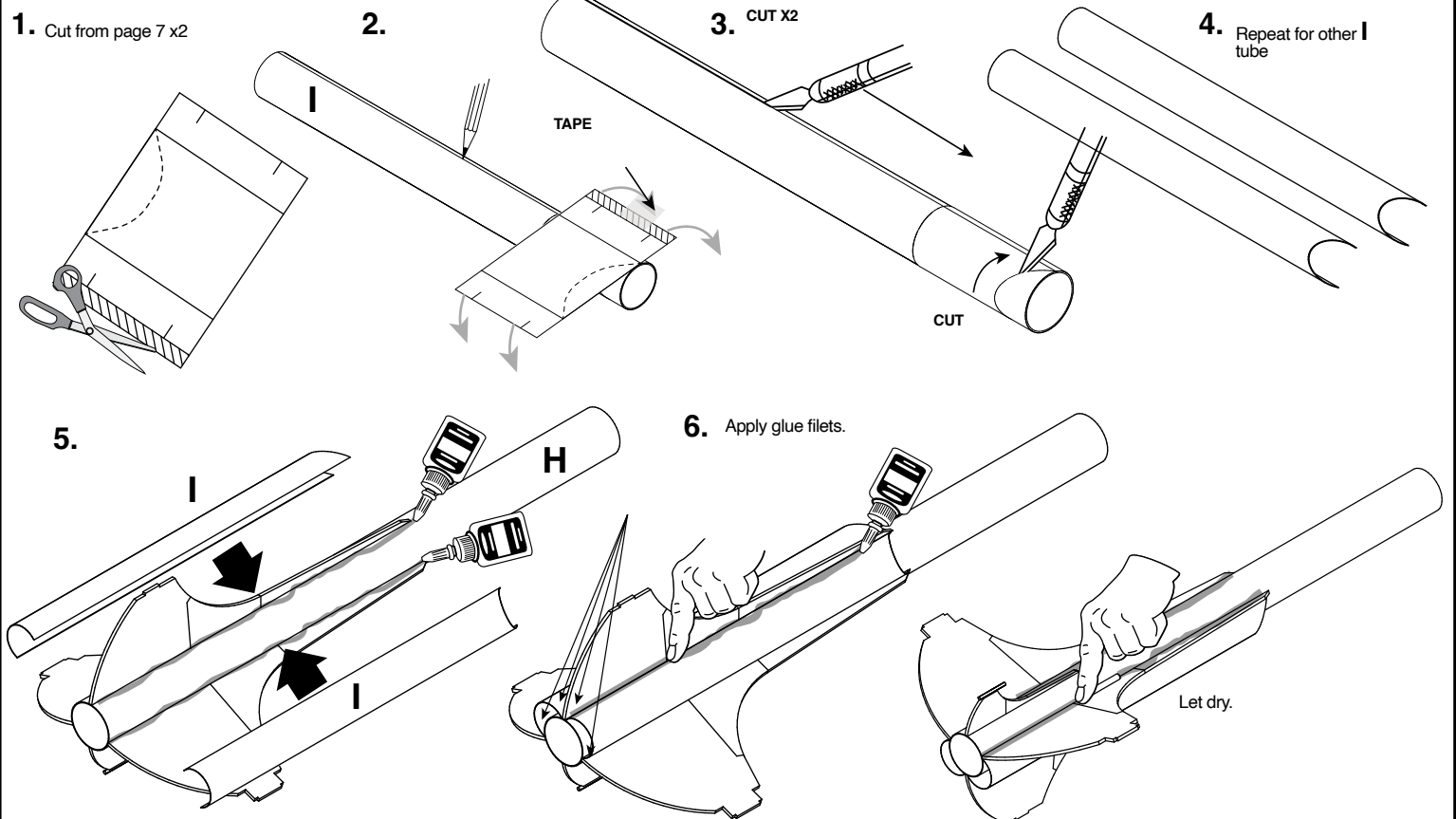
ATTACH FINS



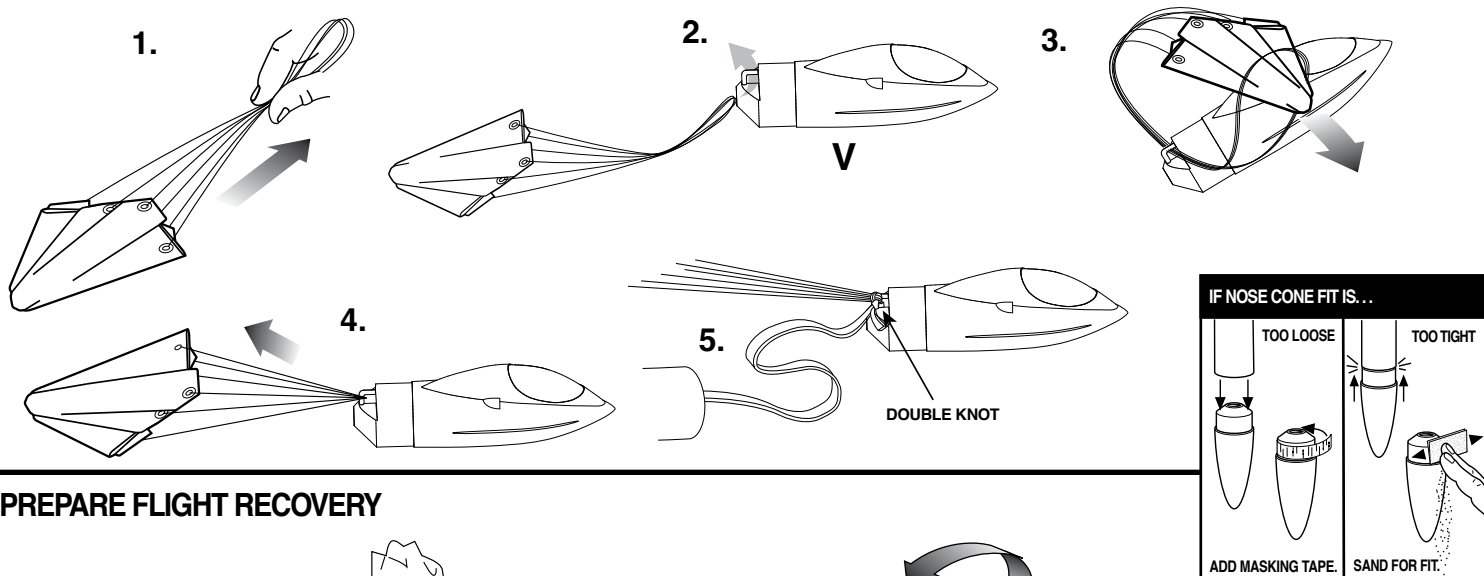
ASSEMBLE LAUNCH LUG



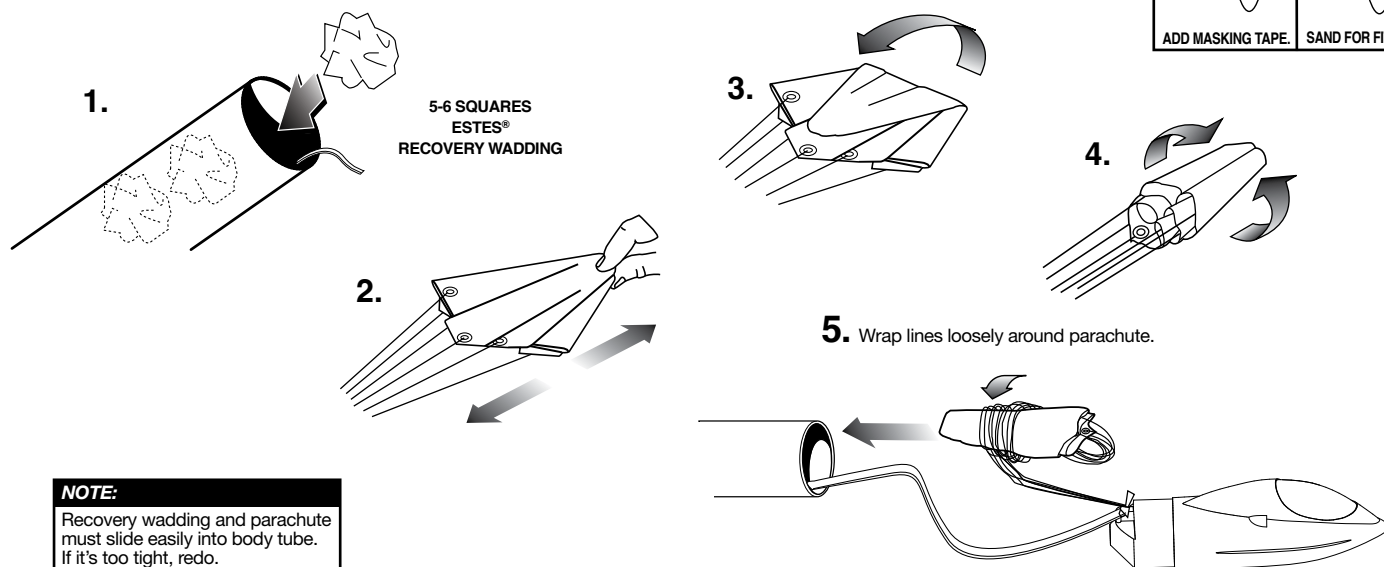
BUILD INTAKE



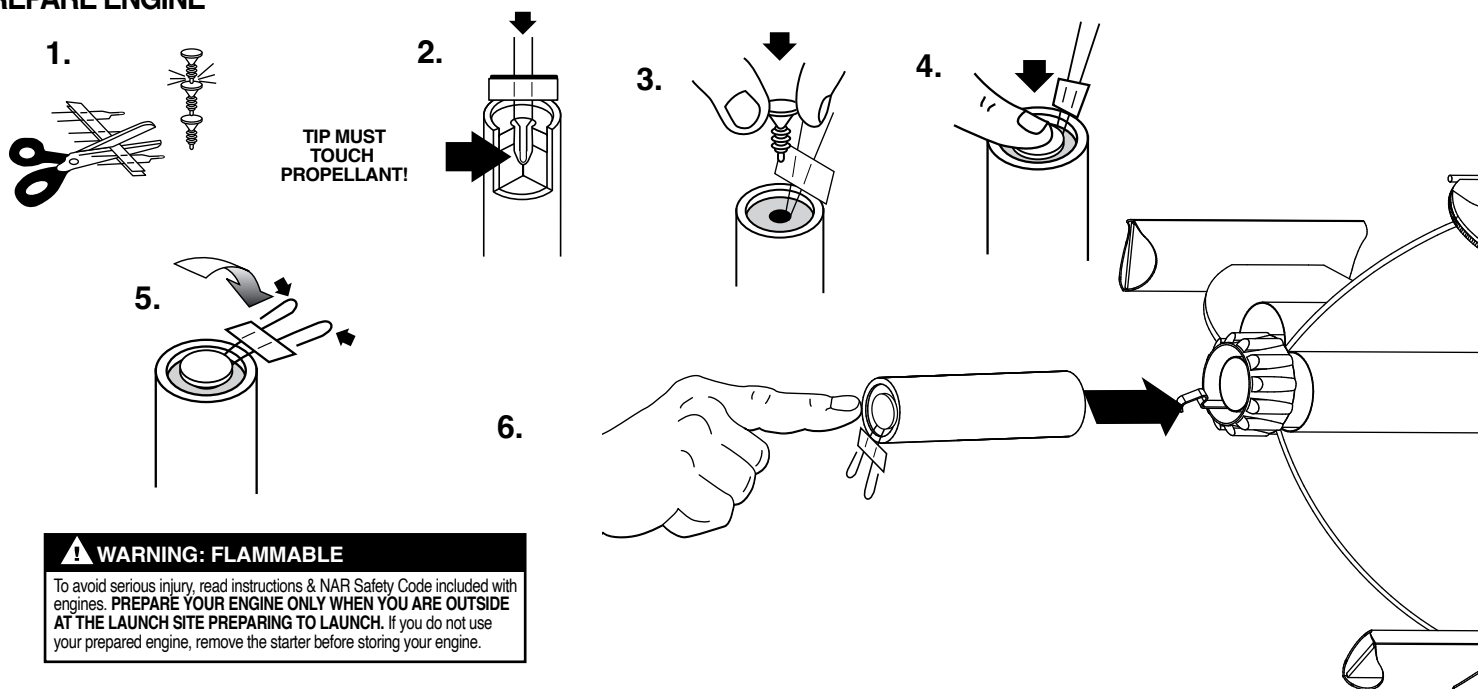
PREPARE RECOVERY SYSTEM



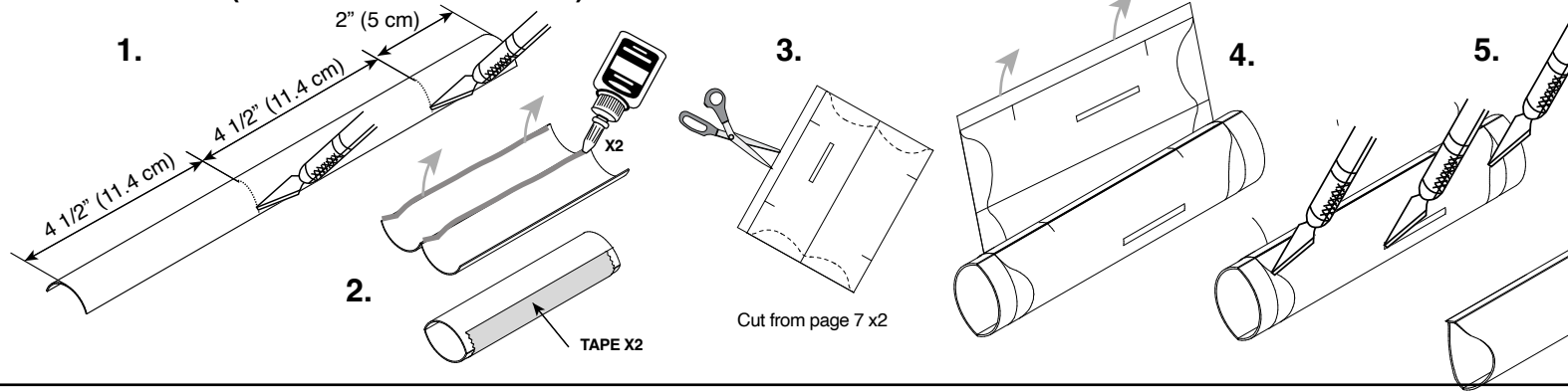
PREPARE FLIGHT RECOVERY



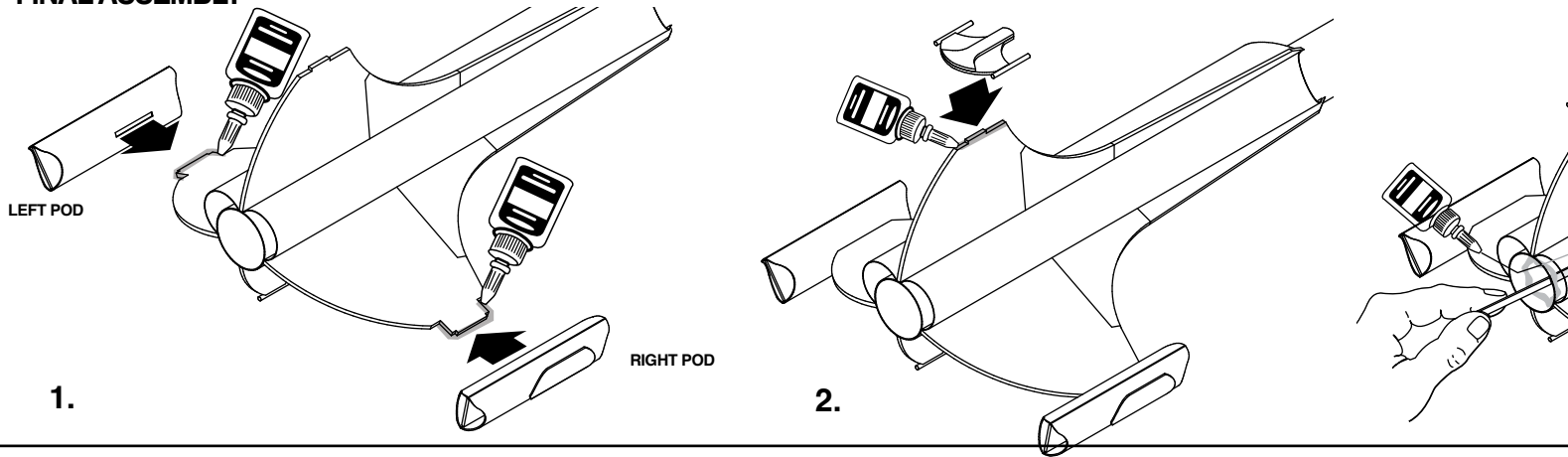
PREPARE ENGINE



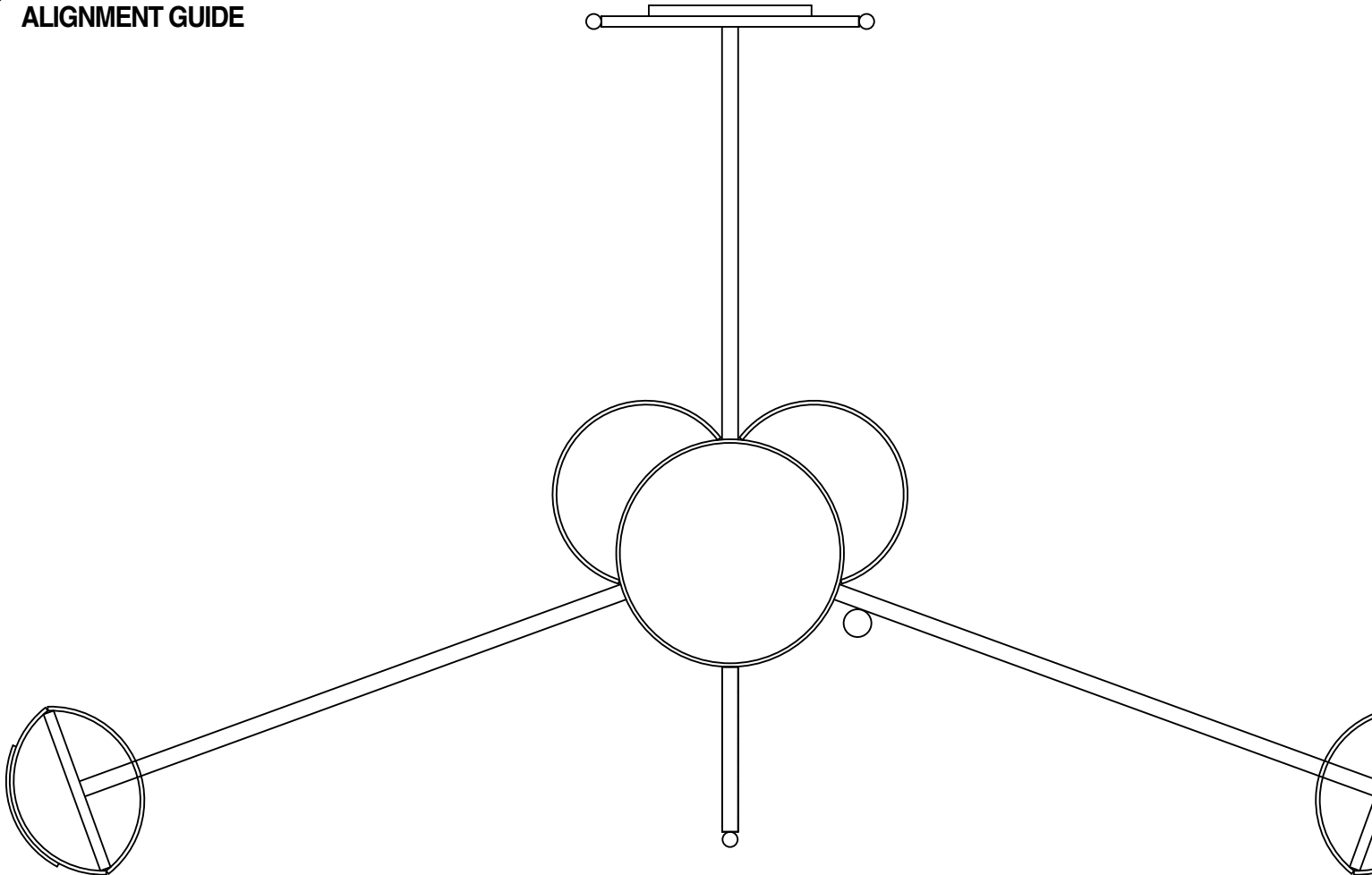
ASSEMBLE POD (MADE FROM LEFT OVER I)

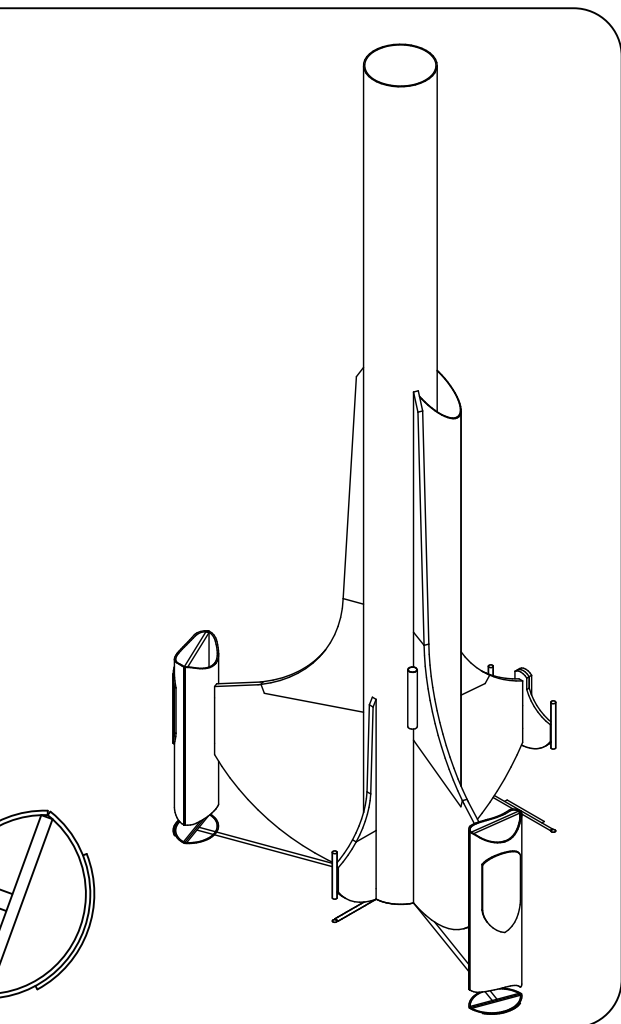
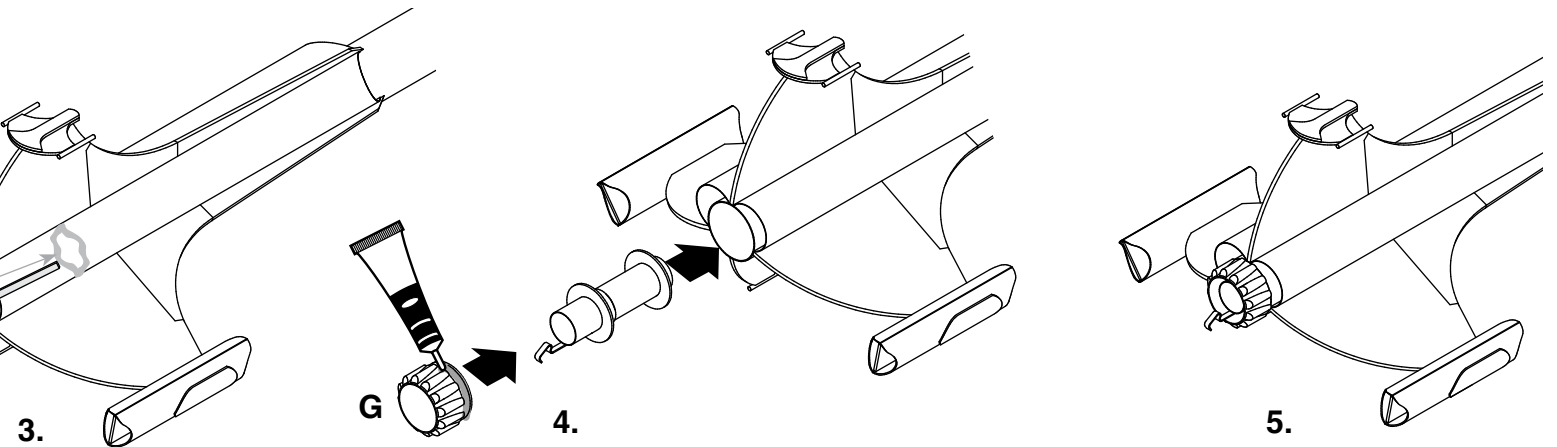
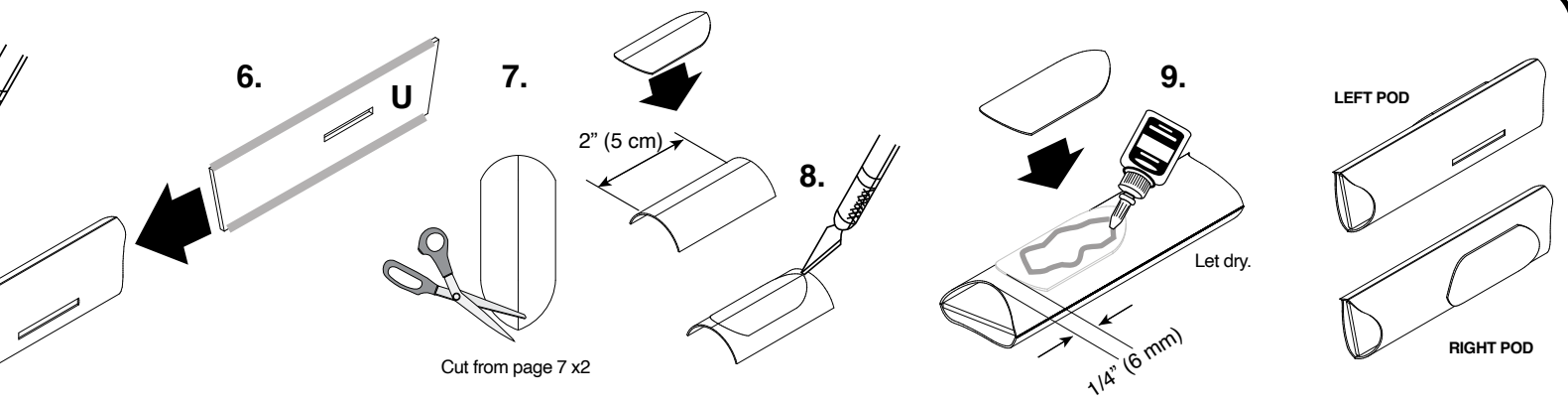


FINAL ASSEMBLY

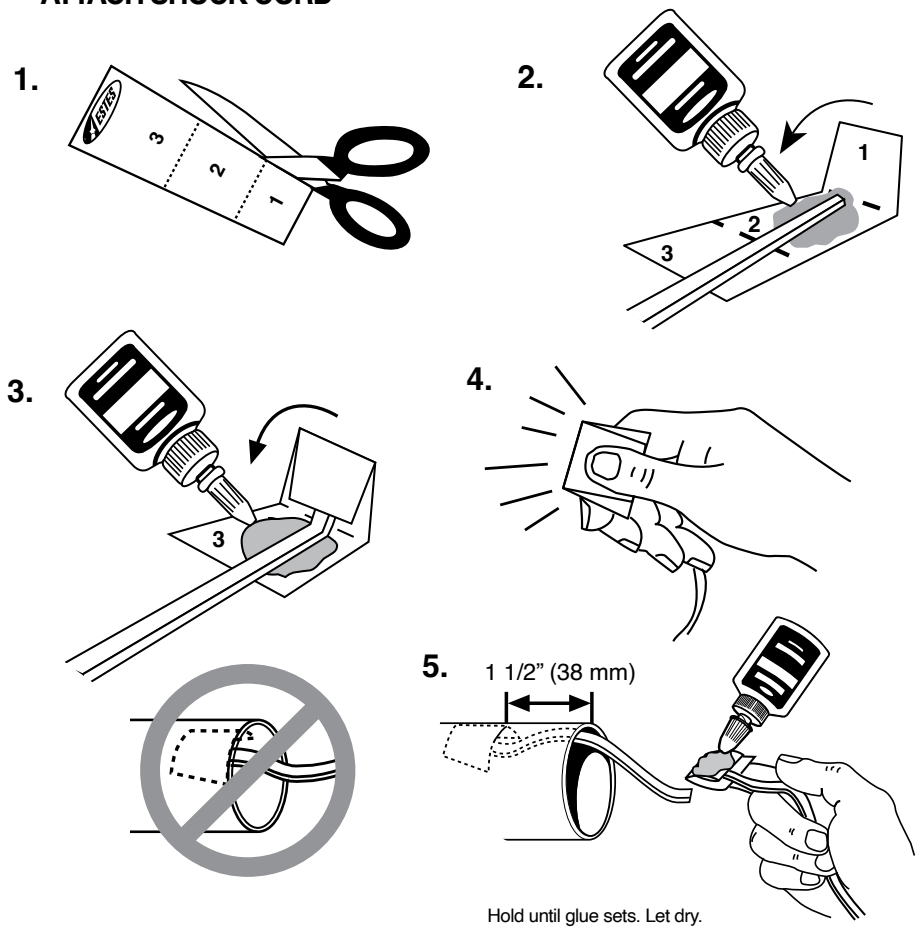


ALIGNMENT GUIDE



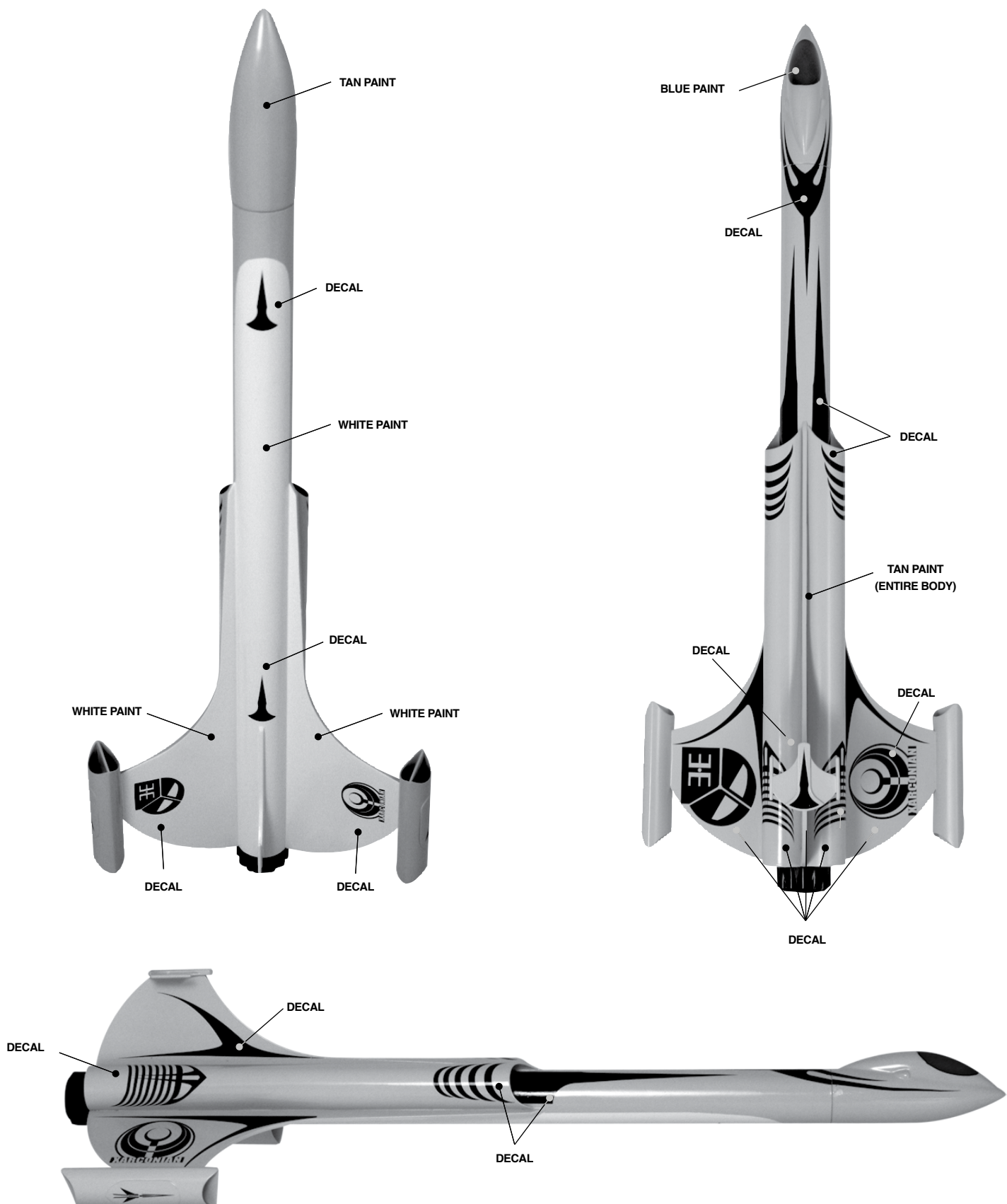


ATTACH SHOCK CORD



ROCKET FINISHING

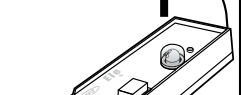
1. Cut decals from sheet, trimming close to edge.
2. One at a time, place in warm water until decal curls and begins to relax.
3. Remove and position on rocket, sliding decal away from backing material.
4. Blot with clean paper towel. Let set overnight.
5. Optional; apply protective clear coat.



COUNTDOWN AND LAUNCH

NOTE:

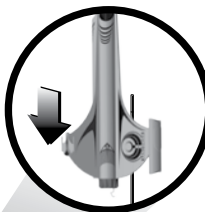
Always keep the key **OUT** until final countdown.



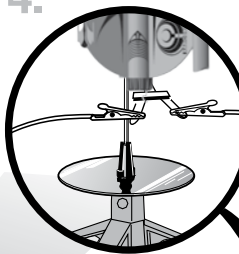
2.



3.



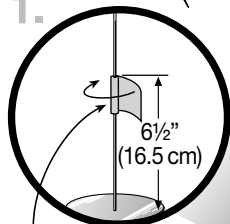
4.



5.

Fully extend your launch controller wire before launching.

1.



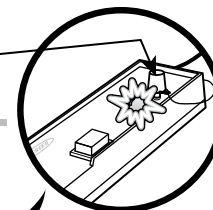
MASKING TAPE

NOTE:

It is important that enough tape is wrapped around launch rod so launch lug does not go over tape.

KEY

6.



Insert key, push down hard. Bulb will light.

7.



While holding key down FIRMLY, press launch button until LIFTOFF!

NOTE:

Estimated weight: 3.7 oz. (105 g)

ESTES® LAUNCH SUPPLIES NEEDED

(Sold Separately)

- Porta-Pad® II Launch Pad
- Electron Beam® Launch Controller
- Recovery Wadding
- Starters (with engines)
- Plugs (with engines)
- Recommended Estes® Engines: C6-3

PRECAUTIONS



NAR SAFETY CODE



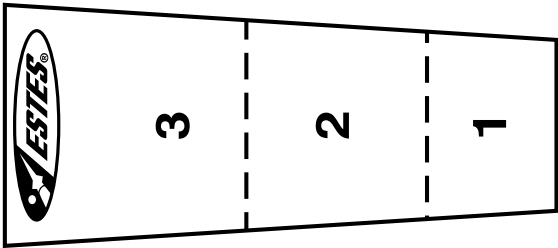
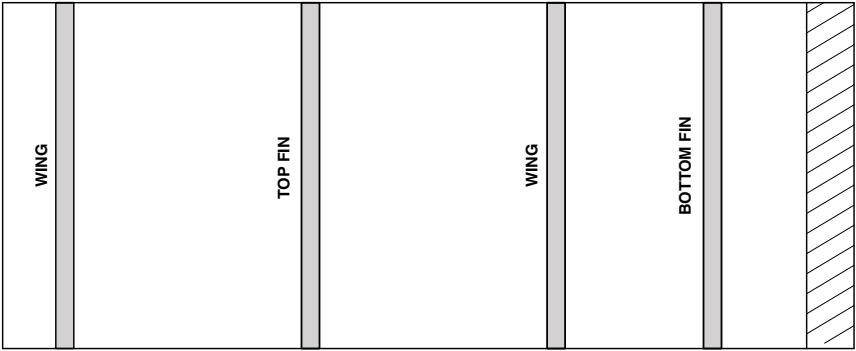
NO DRY GRASS OR WEEDS

PRE-LAUNCH CHECK For safety, never launch a damaged rocket. Check the rocket's body, nose cone and fins. Also, check the engine mount, recovery system and launch lug(s). Repair any damage before launching the rocket.

FLYING YOUR ROCKET Choose a large field (500 ft. [152 m] square) free of dry weeds and brown grass. The larger the launch area, the better your chance of recovering your rocket. Launch only with little or no wind and good visibility. Always follow the National Association of Rocketry (NAR) SAFETY CODE (enclosed).

MISFIRES TAKE THE KEY OUT OF THE CONTROLLER. WAIT ONE MINUTE BEFORE GOING NEAR THE ROCKET. Disconnect the micro-clips and remove the engine. Take the plug and starter out of the engine. A burned starter means the starter tip was not touching engine propellant. Install a new starter; be sure the tip is touching propellant inside the engine. Push the plug in place. Repeat steps under Countdown and Launch.

MARKING GUIDE & SHOCK CORD MOUNT



BUILD TEMPLATES

