



EstesRockets.com

ORANGE BULLET™

7295

AGES 10+

Skill Level

INTERMEDIATE



MODEL ROCKET INSTRUCTIONS
KEEP FOR FUTURE REFERENCE

Designer Signature Series™

The Orange Bullet was a study in changing the center of gravity for a safe recovery. It was designed to kick the engine out at apogee of flight and then lay on its side and gently tumble instead of streamlining in nose first. It had small metal plates on the fins to reliably shift the weight after the engine ejected. This modern replica eliminates the forward vent holes and does not use the metal plates to shift the CG. It still functions the same by kicking the engine out at apogee and then safely recovering. Today we call this "featherweight recovery".

IMPORTANT: Please record date found on decal and keep for future reference. _____

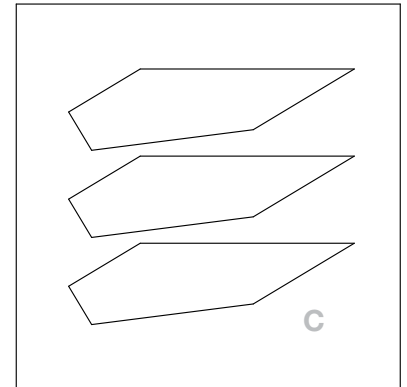
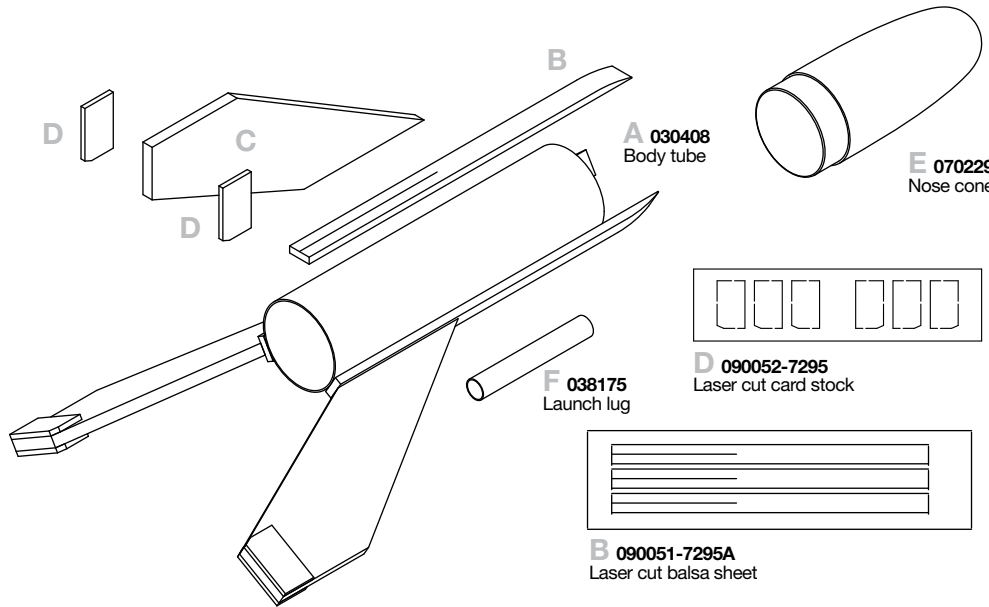
CAUTION:

May not apply to all kits. For safe handling of plastic cement, epoxy, spray adhesive, CA glue, CA accelerator, paint/finishing materials, see manufacturer's warnings and follow instructions for use. To avoid injury, use extreme caution when using hobby knife, scissors, drills, and any cutting tools.

SUPPLIES



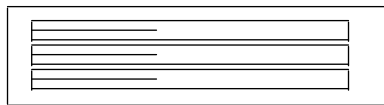
PENCIL SANDING BLOCK FINE SANDPAPER YELLOW GLUE MODELING KNIFE MASKING TAPE WHITE PRIMER PAINT (ORANGE & GREY) CLEAR COAT (OPTIONAL)



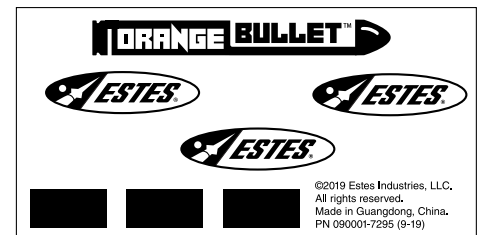
C 090051-7295B
Laser cut balsa sheet



D 090052-7295
Laser cut card stock



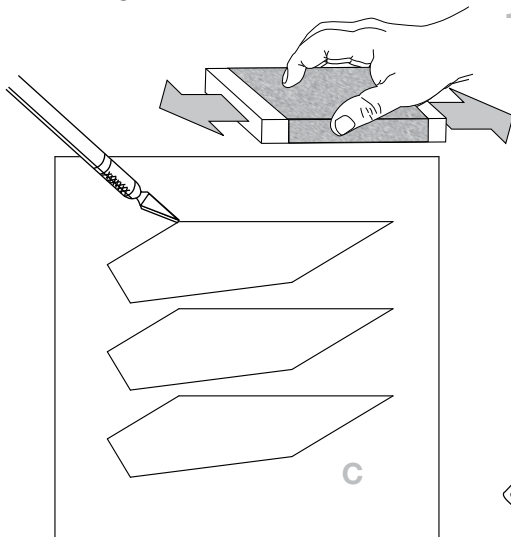
B 090051-7295A
Laser cut balsa sheet



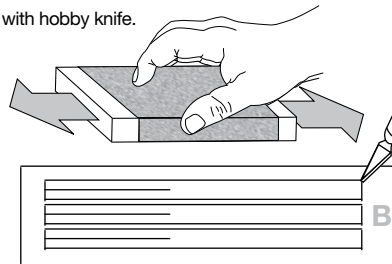
090001-7295
Waterslide decal

©2019 Estes Industries, LLC.
All rights reserved.
Made in Guangdong, China.
PN 090001-7295 (9-19)

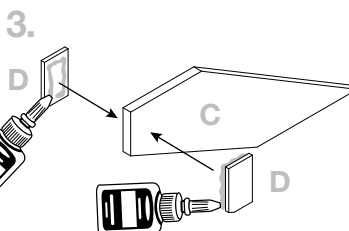
PREPARE FINS



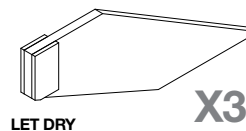
1. Sand both sides of B and C.
Remove parts with hobby knife.



2. Remove parts with hobby knife.



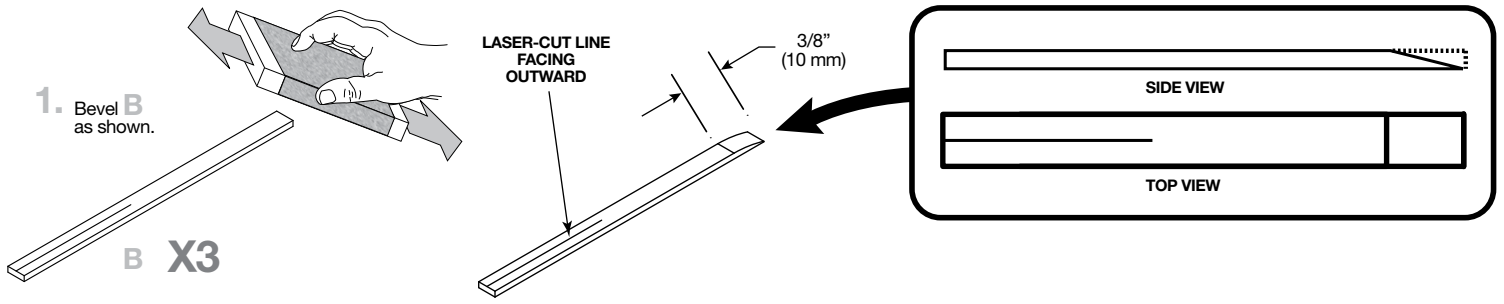
4. Hold until set.



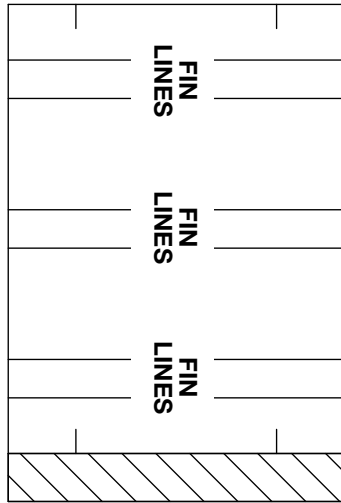
LET DRY

X3

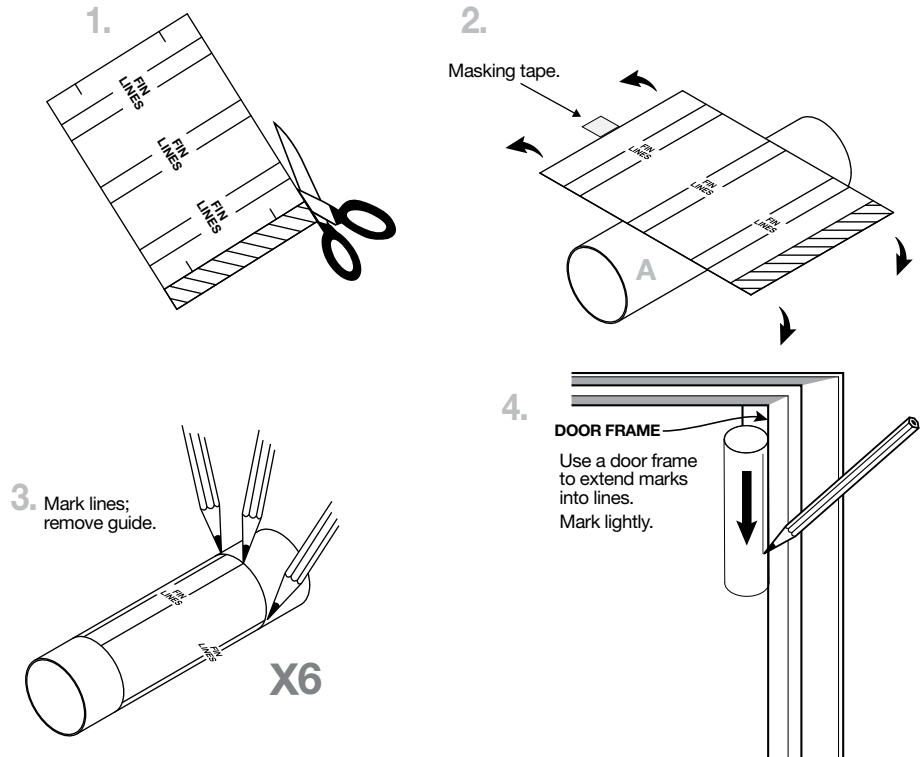
PREPARE FIN SUPPORTS



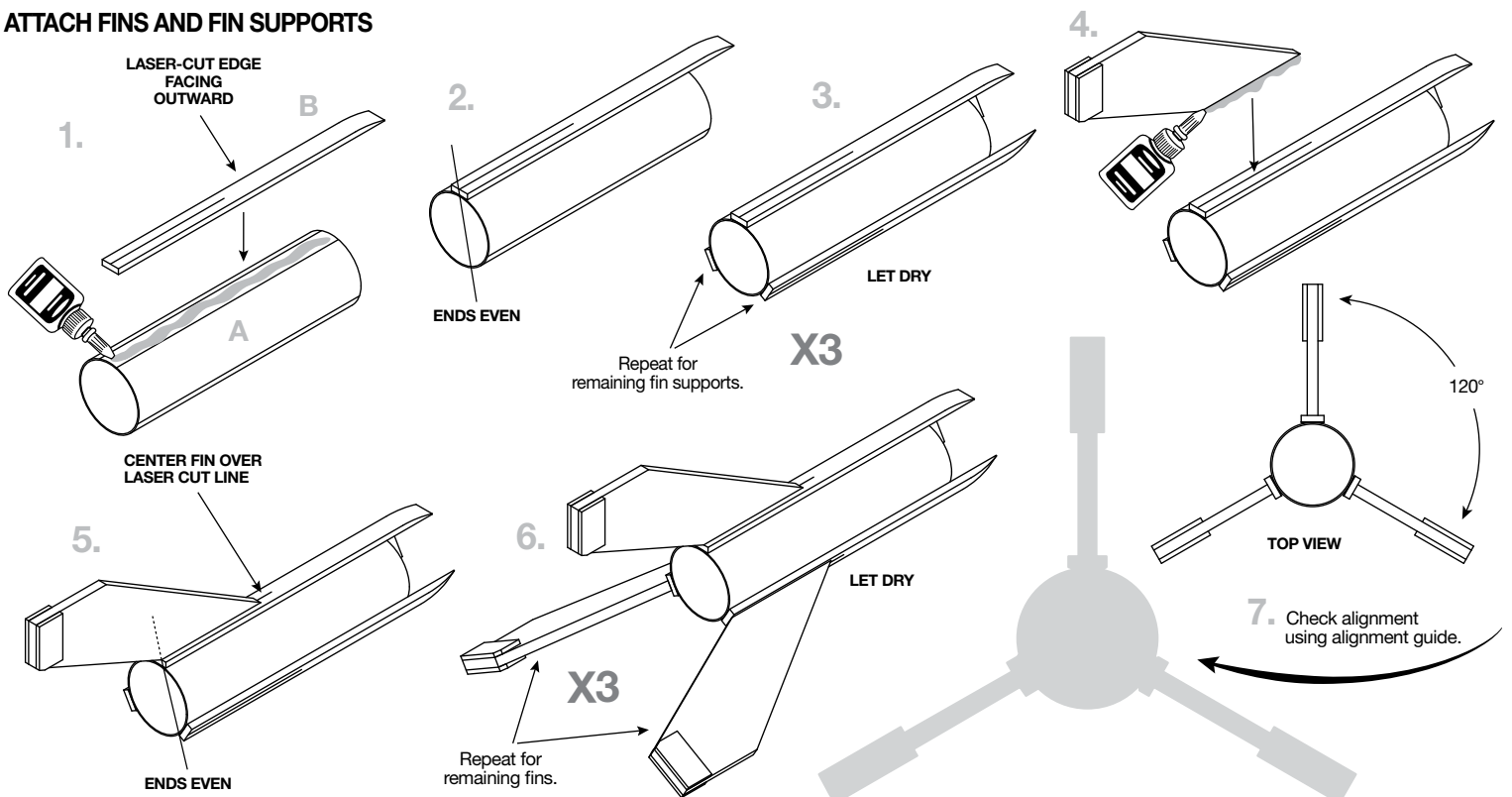
TUBE MARKING GUIDE



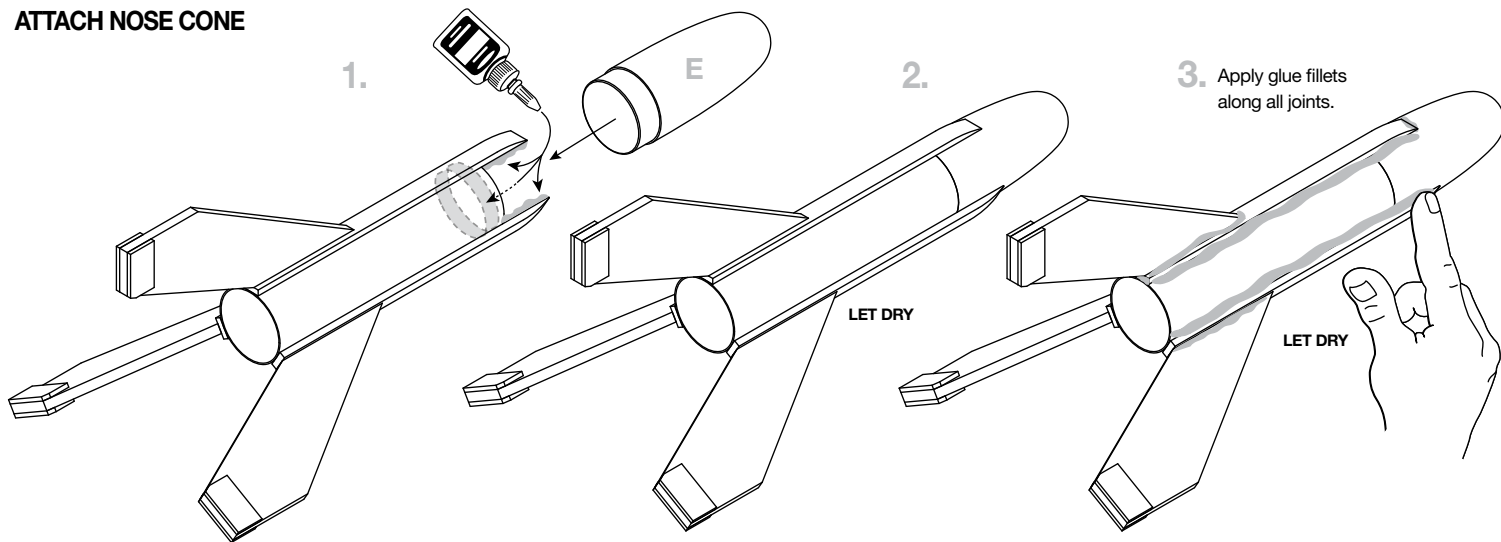
Make a copy if you want to keep instructions.



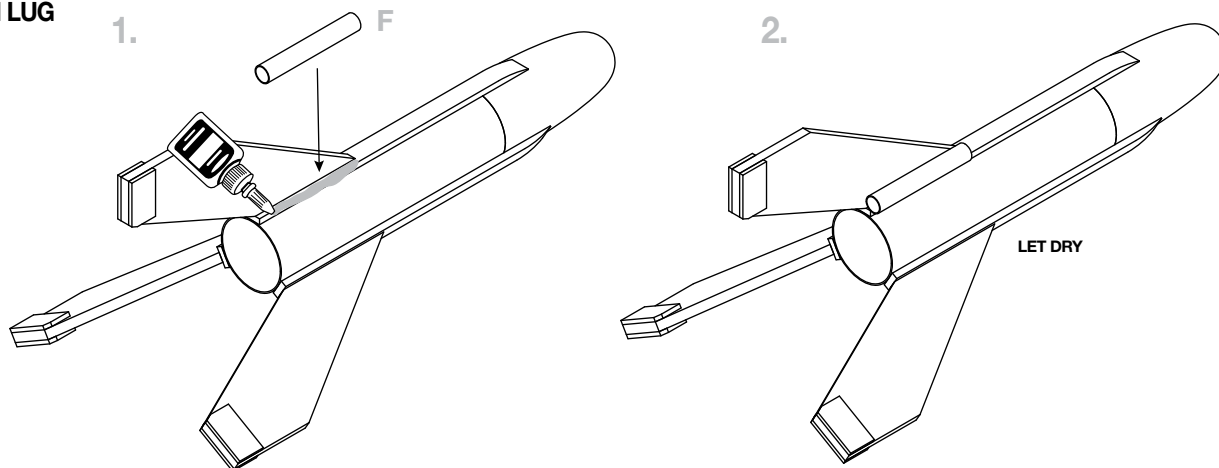
ATTACH FINS AND FIN SUPPORTS



ATTACH NOSE CONE

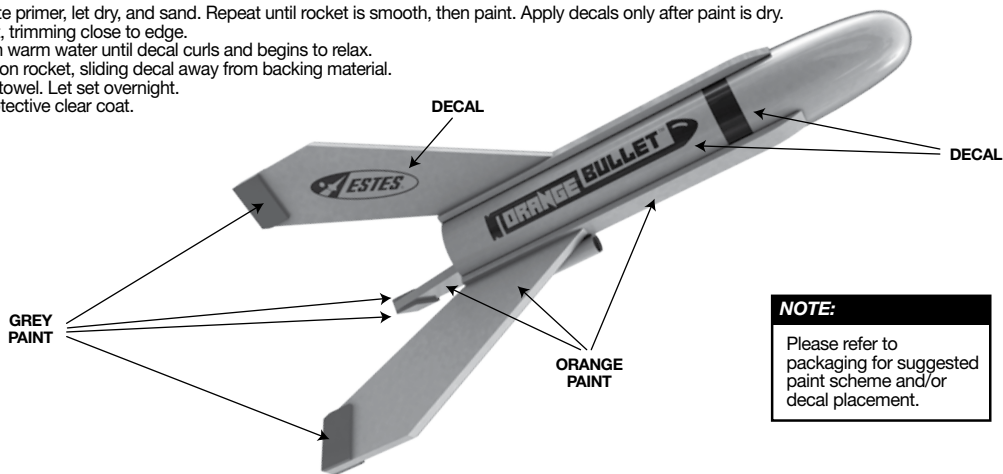


ATTACH LAUNCH LUG



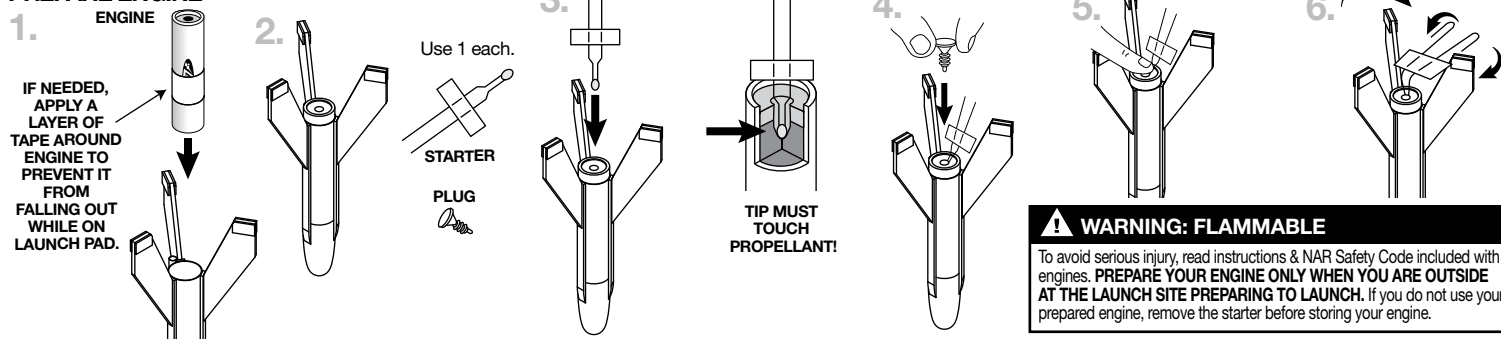
ROCKET FINISHING

1. Spray rocket with white primer, let dry, and sand. Repeat until rocket is smooth, then paint. Apply decals only after paint is dry.
2. Cut decals from sheet, trimming close to edge.
3. One at a time, place in warm water until decal curls and begins to relax.
4. Remove and position on rocket, sliding decal away from backing material.
5. Blot with clean paper towel. Let set overnight.
6. OPTIONAL: Apply protective clear coat.




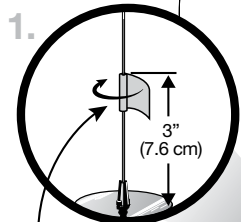
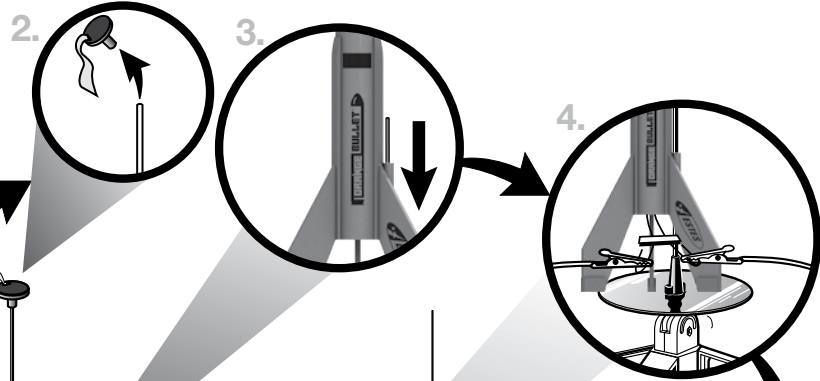
NOTE:
Please refer to packaging for suggested paint scheme and/or decal placement.

PREPARE ENGINE



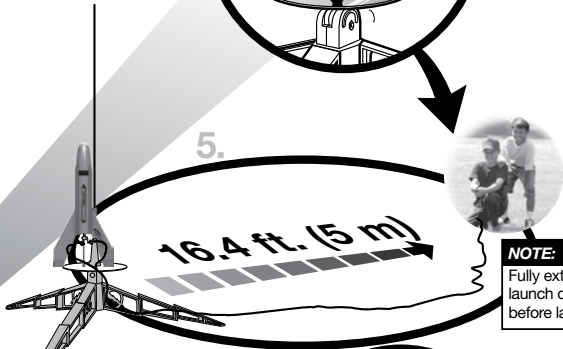
COUNTDOWN AND LAUNCH

NOTE:
Always keep the key **OUT** until final countdown.

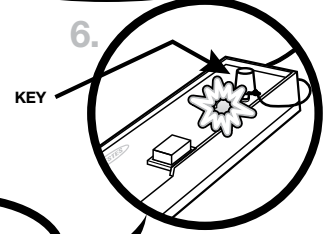



MASKING TAPE

NOTE:
It is important that enough tape is wrapped around launch rod so launch lug does not go over tape.



NOTE:
Fully extend your launch controller wire before launching.

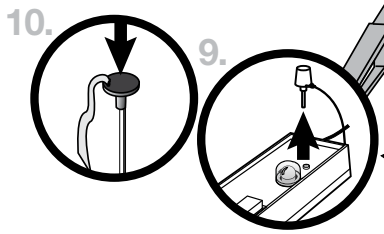


Insert key, push down hard. Bulb will light.



While holding key down **FIRMLY**, press launch button until **LIFTOFF!**

NOTE:
Estimated weight: .24 oz (6.8 g)



- ESTES® LAUNCH SUPPLIES NEEDED**
(Sold Separately)
- Launch Pad
 - Launch Controller
 - Starters (with engines)
 - Plugs (with engines)
 - Estes® Engines: 1/2 A6-2, A8-3

PRECAUTIONS



NAR SAFETY CODE



NO DRY GRASS OR WEEDS

PRE-LAUNCH CHECK For safety, never launch a damaged rocket. Check the rocket's body, nose cone and fins. Also, check the engine mount, recovery system and launch lug(s). Repair any damage before launching the rocket.

FLYING YOUR ROCKET Choose a large field (500 ft. [152 m] square) free of dry weeds and brown grass. The larger the launch area, the better your chance of recovering your rocket. Launch only with little or no wind and good visibility. Always follow the National Association of Rocketry (NAR) SAFETY CODE (enclosed).

MISFIRES TAKE THE KEY OUT OF THE CONTROLLER. WAIT ONE MINUTE BEFORE GOING NEAR THE ROCKET. Disconnect the micro-clips and remove the engine. Take the plug and starter out of the engine. A burned starter means the starter tip was not touching engine propellant. Install a new starter; be sure the tip is touching propellant inside the engine. Push the plug in place. Repeat steps under Countdown and Launch.

